



HEARTH PRODUCTS

HEARTH PRODUCTS  
KITS AND ACCESSORIES

750,219M  
04/2006

**POLISHED BRUSHED  
STAINLESS HOOD TRIM KITS**

**INSTALLATION INSTRUCTIONS FOR BRUSHED STAINLESS HOOD TRIM KITS  
(MODELS: ODGHK36 & ODGHK42) FOR USE WITH 36 & 42 OUTDOOR GAS FIREPLACES**

**GENERAL INFORMATION**

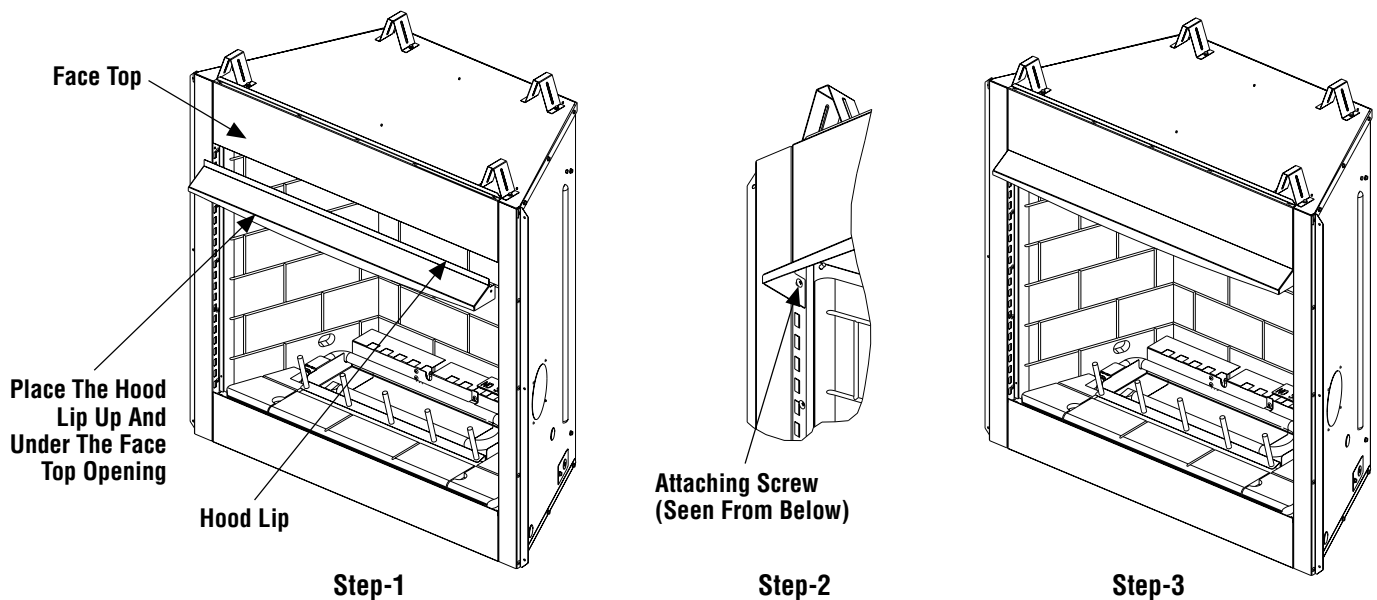
These brushed stainless hood trim kits (36" hood kit - Catalog no. H4818 and 42" hood kit - Catalog no. H4819) may be used with outdoor gas fireplaces. These kits contain one brushed stainless hood, two (2) screws and these instructions.

**INSTALLATION INSTRUCTIONS**

To install the hood trim kit, refer to *Figure 1* and follow the steps outlined below:

**Step 1.** Turn off the fireplace and allow it to cool before proceeding.

**Step 2.** Place the hood lip under the face top opening, as shown in *Figure 1 - Step 1*. Attach the hood with two (2) screws, one each side, as shown in *Figure 1 - Step 2*. Completed installation is shown in *Figure 1 - Step 3*.



*Figure 1*

NOTE: DIAGRAMS & ILLUSTRATIONS NOT TO SCALE.

Lennox Hearth Products reserves the right to make changes at any time, without notice, in design, materials, specifications, prices and also to discontinue colors, styles and products. Consult your local distributor for fireplace code information.