



HEARTH PRODUCTS

HEARTH PRODUCTS
KITS AND ACCESSORIES

P/N 506033-01
Rev. A, 02/2009

PI40 HEAT KIT

**INSTALLATION INSTRUCTIONS FOR INSTALLING A HEAT KIT
FOR USE WITH WINSLOW™ PI40 PELLET FIREPLACE INSERT**



KIT CONTENTS (See Figure 1)

Please ensure that all these parts are in one of the two boxes.

- 1 ea. 2" Lower Trim Piece - Item A.
- 1 ea. 1" Insulation board - Item B.
- 2 ea. 1/2" x 10-24" Screws - Item C.
- 1 ea. Instruction Sheet

Pellet Heat Kit		
Cat. No.	Model	Description
79024	PI40-HK	Pellet Heat Kit

Notes

- This kit can be used in conjunction with a Zero Clearance Kit (Cat. No. 79025).
- The heat kit also requires the use of the surround panels and trim pieces listed below (sold separately).

Pellet Heat Surround and Trim Kits (sold separately)		
79026	PI40-HK30411	30-5/8" Ht. x 41" Wd. Surround Panels
79027	PI40-HK3048F	30-5/8" Ht. x 48" Wd. Surround Panels
79028	PI40-HK3441F41	34-5/8" Ht. x 41" Wd. Surround Panels
79029	PI40-HK3448F	34-5/8" Ht. x 48" Wd. Surround Panels
75251	GFHKET-B	Extended Side Trim Kit, Black (775208M)
75062	GFHKET-G	Extended Side Trim Kit, Gold (775208M)
75063	GFHKET-N	Extended Side Trim Kit, Nickel (775208M)

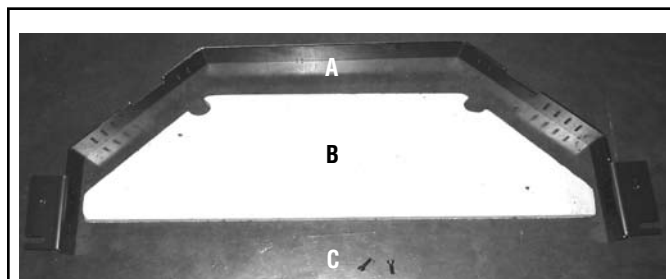


Figure 1 - Pellet Heat Kit

TOOLS NEEDED:

5/32" Allen Wrench Or T-Handle Wrench

GENERAL INFORMATION

IMPORTANT, IF ANYTHING OTHER THAN A MASONRY HEARTH IS USED WITH THE WINSLOW FIREPLACE INSERT, YOU MUST USE THIS HEAT KIT.

If you encounter any problems, need clarification of these instructions or are not qualified to properly install this kit, contact your local distributor or dealer.

Read this instruction sheet in its entirety before beginning the installation.

ALL WARNINGS AND PRECAUTIONS IN THE INSTALLATION AND OPERATION MANUAL PROVIDED WITH THE APPLIANCE APPLY TO THESE INSTRUCTIONS.

TURN OFF THE FIREPLACE INSERT AND ALLOW IT TO COMPLETELY COOL BEFORE PROCEEDING.

INSTALLATION INSTRUCTIONS

Step 1. Install the 2" lower trim piece - Fasten the 2" trim piece underneath the base of the front of the insert as follows; use a 5/32" allen wrench or T-handle wrench to secure the 2 screws (Item C) provided, one at the left side and one at the right side base of the insert. **Note:** This process will be simplified by very cautiously tilting the insert back (see Figure 3).

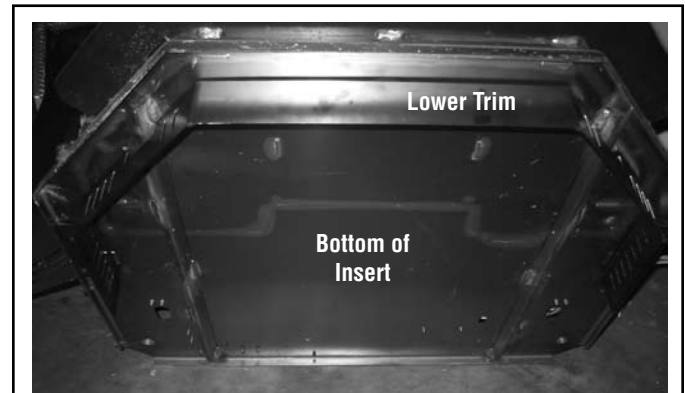


Figure 2

Step 2. Install your four leveling bolts (provided with the appliance). Open the main front door and remove the two bolts in the front right and front left of the bottom of the firebox (see **Figure 3**). **Note:** *Placing a level on the insert top is recommended to ensure your insert is level.* Again with the insert very cautiously tilted back, insert your four leveling bolts approximately 2-1/16 inches into the holes provided at the bottom of the insert see **Figure 4**.

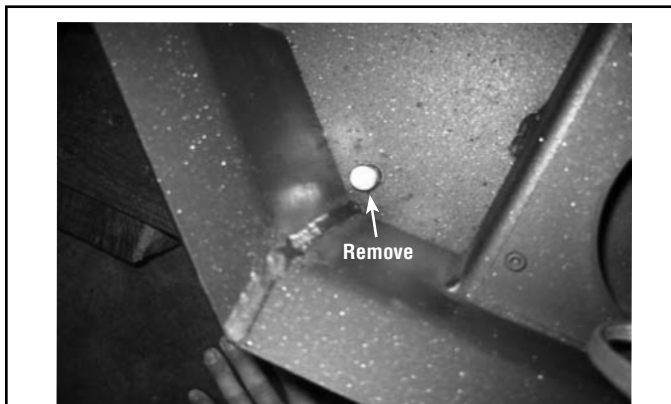


Figure 3

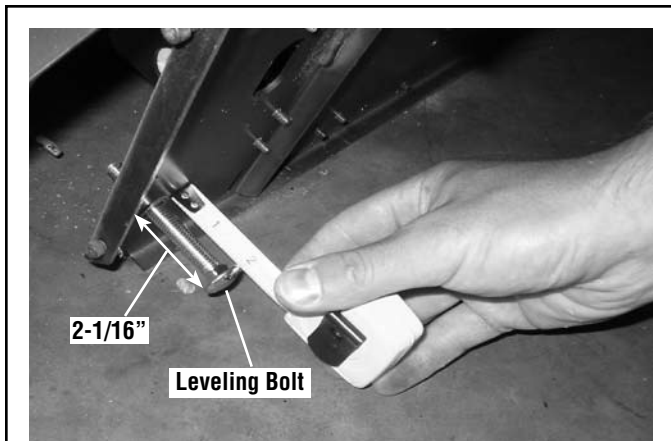


Figure 4

Step 3. Set the insert on the insulation board. Now that the insert is level, place your insulation board in place where the insert will be installed and set the PI40 insert over the insulation board so the two front leveling legs line up with the two cut-outs in the front of the insulation board (see **Figure 5**). Your PI40 heat kit is now installed.

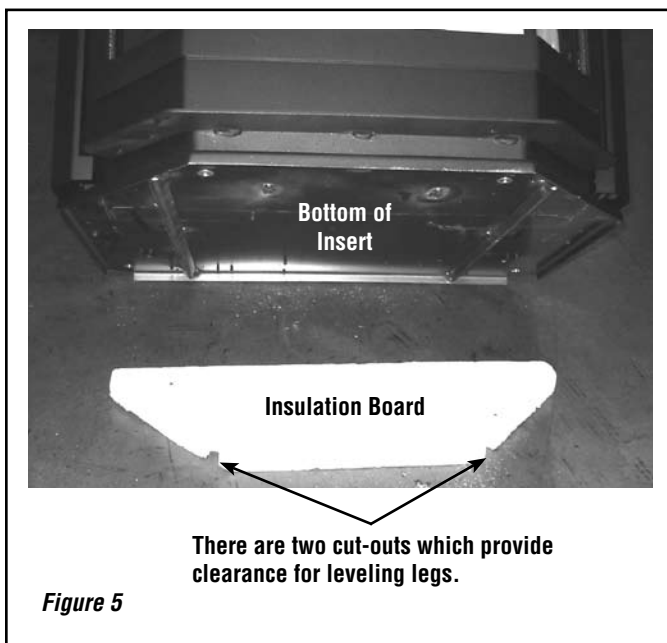


Figure 5

NOTE: DIAGRAMS & ILLUSTRATIONS ARE NOT TO SCALE.

Lennox Hearth Products reserves the right to make changes at any time, without notice, in design, materials, specifications, prices and also to discontinue colors, styles and products. Consult your local distributor for fireplace code information.

LENNOX
HEARTH PRODUCTS